

PORTALES ROTARY CLUB MEMBERSHIP

2016 - 2017

- ◆◆★ Anderson, Charles (Tommye) Adoption Agency
- ◆◆★ Baker, Wayne (Jo Anna) Peanut Growing & Distribution
- ◆◆★ Bartl, Noelle (John) University Relations
- ◆◆◆ Cooper, Eldin (Sherry) Appraisal Service
- ◆ Corbin, Dr. Deborah Asst. Prof. of Accounting
- ◆◆ Davis, Scott (Janet) Retail Furniture Active
- ◆◆◆ Gamble, Steven Honorary
- ◆◆ Gormley, Mark (Shannon) Portales High School Principal
- ◆◆◆ Haney, Matt Professor of Management
- ◆◆ Hildebrand, Lindsay (Zachary) Property Management
- ◆◆ Hunton, Matt (Sara) Insurance
- ◆◆◆ Jenkins, Grady (Celia) Farm Management
- ◆◆◆ Martin, Joey Plant Manager
- ◆◆★ Moore, Thom (Cozetta) Printing Equipment
- ◆◆◆ Nickles, Don (Julie) Printing Production

- ◆◆ O'Rear, Glen (Tammie) Investment
- ◆◆★ Partin, Jerry (Karla) Utilities, Electric
- ◆◆★ Rankin, Randy (Cathy) Child Care Administrator
- ◆◆◆ Roe, Darrell ENMU Prof. of Communications
- ◆◆★ Sanchez, Antonio (Layle) Electrical Engineering
- ◆◆◆ Sanchez, Layle (Antonio) County Office
- ◆◆◆ Schneider, Bob (Leticia) ENMU
- ◆◆ Self, Jack (Jan) Christian Children's Home
- ◆◆◆ Smith, William Chiropractor
- ◆◆◆ Stockly, Sue Education
- ◆◆◆ Terry, Karl (Carol) Chamber of Commerce
- ◆◆★ Thomas, Don (Suzanne) Ministry
- ◆◆◆ Thomas, Leroy (Gaynelle) Sr. Act. Printing
- ◆◆◆ Wilson, Buck (Roberta) Dentist
- ◆◆★ Wood, Chris Mortgage Broker

PAUL HARRIS SOCIETY RECIPIENTS

- | | | |
|-----------------|-------------------|------------------|
| Tommye Anderson | Carolyn Edwards | Charles May |
| Bill Calton | Dennis Edwards | Bob Matheny |
| Christine Davis | Jack Greathouse | Howard Melton |
| Holly Davis | Gordon Greaves | Cozetta Moore |
| Leslie Davis | Gordon Hatch | L.W. McGuffin |
| Otis Davis | Jan Hauptmann | Janet Shearer |
| Susan Davis | Rick Hauptmann | Billy Smith |
| The Portales | Estella Huybregts | Florence Wilson |
| Rotaract Club | Sharon King | Bobbye Woodul |
| | Dessie Langston | Parker Woodul |
| | Dewey Langston | Jack Williamson |
| | | Jim Williamson |
| | | Nancy Williamson |

- Past District Governors: ◆ Past District Governor ◆◆ Paul Harris Society
 Dennis Edwards ★ Past President ‡ Benefactor
 Floyd Golden
 Dewey Langston
 Parker Woodul



Opportunities to Make-Up Rotary

- Hi Plains Rotary Club
Tuesday - Noon - Clovis Civic Center.
- Melrose Rotary Club
Monday Evening 7:00 p.m. - Melrose School
- Farwell Rotary Club
Wednesday - 12 noon (CST) - Farwell, TX Community Center
- Muleshoe Rotary Club
Tuesday - 12 noon (CST) - Muleshoe Convention Center
- Clovis Noon Day Rotary Club
Thursday - 12 noon - Clovis Civic Center - Esperanza Room
- ONLINE
www.rotaryclubone.org
- FORWARD MAKE-UP INFORMATION TO ELDIN AT:
cooperappraisal@yucca.net

TRAVELING
 Check the Rotary Web Site for Club Meetings wherever you are traveling. Just enter the name of the city you are visiting - it will do the rest!
www.rotary.org

Paul Harris Society Members

The following have multiple Paul Harris Awards.

- Charles Anderson+2
- Wayne Baker +1
- Noelle Bartl+1
- Eldin Cooper+4
- Deborah Corbin+10
- Don W. Davis+1
- Scott Davis+1
- Randy Fowler+1
- Gerry Huybregts+3
- Matt Hunton+1
- Grady Jenkins+1
- Sharon King+1
- Thom Moore+1
- Jerry Partin+1
- Randy Rankin+1
- Antonio Sanchez+1
- Jack Self+1
- Jimmie Shearer+1
- Sue Stockly+3
- William Smith+3
- Don Thomas+2
- Leroy Thomas+1
- Buck Wilson+1
- Chris Wood+1

UPCOMING PROGRAM SCHEDULE:

- Mar. 8 Chris Wood
- Mar. 17 Sharon King
- Mar. 24 Ag Expo Week

Portales Rotary Club Web Page:
<http://portalesrotary.yucca.net/>

Portales Rotary Club, No. 1317 Portales, N.M., U.S.A., 88130

Meets Wednesday at 12:15 p.m.

ROTARY YAM

ROTARY INTERNATIONAL PORTALES ROTARY CLUB

FEB. 23, 1905

FEB. 5, 1935

Four Way Test

Is it the TRUTH?
 Is it FAIR to all concerned?
 Will it build GOODWILL and BETTER FRIENDSHIPS?
 Will it be BENEFICIAL TO ALL concerned?



Glen O'Rear
President



Dave Anderson
District Governor

VOL. 28 - No. 29

DON THOMAS - EDITOR

Wednesday, March 1, 2017

PROGRAM TODAY:

President Elect Don Nickles will share some of the great things he learned at PETS this weekend! Also, we hope to share some plans and ideas for the upcoming Ag Expo Cookout! It's gonna be here faster than you know- Friday March 24! Let's make this the biggest year ever!!

PROGRAM NEXT WEEK:

Chris Wood is scheduled to bring us an EXCITING program!

PROGRAM LAST WEEK:

Bob Schnieder brought some visitors from the Wounded Warrior project. We passed the pig and were able to help with about \$200!! Way to go, Rotarians!!

FOOD DISTRIBUTION WAS A HUGE SUCCESS!!

Thanks to the many Rotarians that came out to help!! Although, we had many out of town, we were able to serve 265 families, and distribute over 6 TONS of food in just under 2 hours!! Please continue to THINK about the Food Distribution and how it helps many under-served people in our area! It's really a great opportunity to put "Service Above Self!"

ATTENDANCE REPORT

Membership	Attended	Attendance Percentage
28	25	89.29%

MUD LIST - Did Not Make Up!

DAVIS • PARTIN • WOOD

MISSING - - - SECOND CHANCE

DAVIS • PARTIN • WOOD

MISSING LAST WEEK

DAVIS • HANEY • PARTIN • WOOD

MARCH BIRTHDAYS

- Charles Anderson4
- Jack Self9
- William Smith14
- Buck Wilson16

IF YOU MAKE UP, THE PORTALES ROTARY CLUB GIVES YOU CREDIT FOR THE MEAL YOU MISSED.
 IF YOU DO NOT MAKE UP, YOU ARE CHARGED FOR THE MEAL YOU MISSED PLUS A \$1.00 FINE.

PROGRAM ALERTS:

Check with Don Nickles about your upcoming program...let's REALLY publicize them and know what the programs are so we can invite friends! Rotary IS FUN-show that to your friends!! If you know what your program is, PLEASE let the editor know AT LEAST TWO WEEKS prior to your actual program! You can email it to donthomas@yucca.net and we will get it publicized!!

PORTALES BASKETBALL KEEPS THE WINNING GOING!

The ENMU Ladies Team has made the Lone Star Conference tournament as the NUMBER 1 SEED! Games start in Allen Texas this Thursday!! Root them on and follow the action at www.goeasternathletics.com!

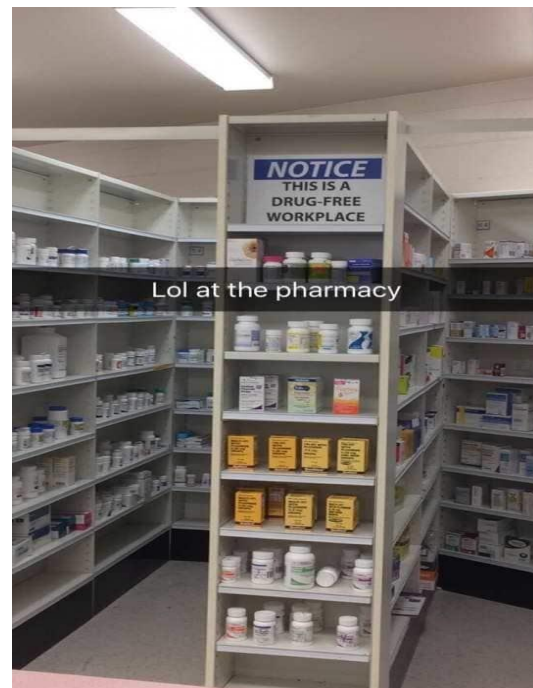
Portales Rams are DISTRICT CHAMPS and they head to the State Tournament as the #2 seed in 4A! They will play SHIPROCK (#15) on March 4 at PORTALES HIGH! Go Rams!!

HUMOR IN REAL LIFE...Episode 1

(There may be more...depends on what Don finds on the internet!)



I guess we'll have to wait until AFTER 8 for the party to start!



"Dey may not be da best donuts...but"



These are projects that the Rotary Club of Portales is currently involved in:

- Ag-Expo Chuck Wagon
- Honor Students of the Month
- Portales Christmas Light Project
- Support Roosevelt County Literacy Council
- Rotary Park
- Support Christian Children's Home
- Support Baptist Children's Home
- "Power Card"
- Send local students to Camp RYLA
- Adopt-A-Mile on Clovis Highway - 2 times yearly
- Deliver Meals on Wheels
- Scholarship Fund at ENMU
- Donate children's books to Portales Public Library
- Help with ENMU Homecoming Parade
- Matching Grants with Rotary Club of Delicias Mexico
- Every Rotarian Every Year (\$100/member/year)
- Simplified Grants - \$1.00 for \$1.00 match by District 5520
- Rotary Foundation Matching Grants - \$5,000 to \$150,000

PORTALES ROTARY CLUB

OFFICERS

PRESIDENT: Glen O'Rear
 VICE PRESIDENT: Karl Terry
 PRESIDENT-ELECT: Don Nickles
 SECRETARY-TREASURER: Eldin Cooper

BOARD OF DIRECTORS

Deborah Corbin • Antonio Sanchez • Sue Stockly • Chris Wood
 2016-17 COMMITTEE APPOINTMENTS

CLUB ADMINISTRATION Don Nickles - CP	PUBLIC RELATIONS PUBLICITY Don Nickles Noelle Bartl Grady Jenkins Mark Gormley WEBSITE/Facebook Sue Stockly Antonio Sanchez Matt Haney	MEMBERSHIP Don Nickles - CP MEMBERSHIP DEVELOPMENT Don Nickles Bill Smith Leroy Thomas Jack Self RETENTION/MEMBER TRAINING Thom Moore Karl Terry Matt Hunton	MEALS ON WHEELS Sue Stockly Rob Schneider Wayne Baker Leroy Thomas Lindsay Hildebrand CHILDREN'S HOME OUTREACH Rob Schneider Leroy Thomas Buck Wilson Layle Sanchez Jack Self Thom Moore
SERGEANT AT ARMS Randy Rankin (July - Aug) Chris Wood (Sept. - Oct.) Don Thomas (Nov.-Dec.) Layle Sanchez (Jan.-Feb.) Matt Hunton (Mar-April) Jerry Partin (May-June)	ROTARY INTERNATIONAL AND ROTARY FOUNDATION GRANTS/PROGRAMS Deborah Corbin Matt Haney Bob Schneider Chris Wood Eldin Cooper	FELLOWSHIP Buck Wilson Randy Rankin Layle Sanchez Joey Martin COMMUNITY SERVICE Sue Stockly - CP AG EXPO / FUND-RAISING Scott Davis Wayne Baker Charles Anderson Leroy Thomas Lindsay Hildebrand Buck Wilson Randy Rankin	FOOD ASSISTANCE PROGRAM Leroy Thomas Sue Stockly Jerry Cordova NEW GENERATIONS Wayne Baker - CP INTERACT/ROTARACT/RYLA Wayne Baker Layle Sanchez Larry Learning John Hilliard Buck Wilson
PROGRAM CHAIR Don Nickles	SCHOLARSHIPS Rob Schneider Randy Rankin Antonio Sanchez Chris Wood	2017-18 BOARD Debra Corbin (President-Elect) Antonio Sanchez Sue Stockly Lindsay Hildebrand Noelle Bartl Alternates Chris Wood Mark Gormley	STUDENT OF THE MONTH Antonio Sanchez Layle Sanchez Mark Gormley 4 WAY TEST ESSAY CONTEST Charles Anderson Larry Learning John Hilliard Bill Smith Joey Martin
ATTENDANCE Don Nickles Glen O'Rear Rob Schneider Karl Terry Eldin Cooper	CLUB BULLETIN Leroy Thomas (July-Aug.) Charles Anderson (Sept. -Oct.) Sue Stockly (Nov.-Dec.) Jack Self (Jan.-Feb.) Don Thomas (Mar-Apr.) Thom Moore (May-June)		

